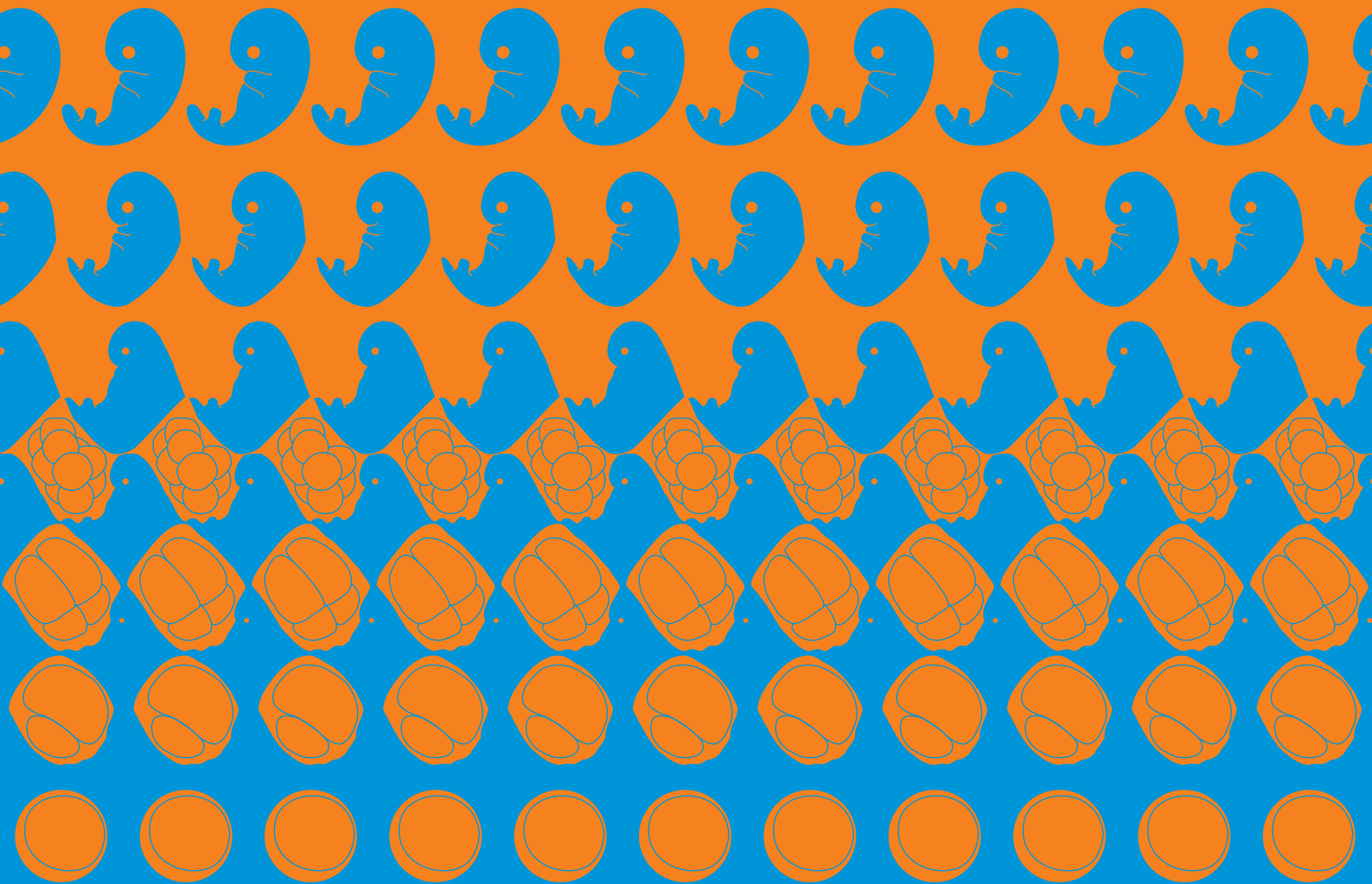


CDB Symposium 2009

# Shape and Polarity

March 23-25, 2009

RIKEN Center for Developmental Biology (CDB), Kobe, Japan



**Julie Ahringer**

University of Cambridge, UK

**Jeffrey D. Axelrod**

Stanford University, USA

**Ping Chen**

Emory University, USA

**Jon Clarke**

King's College London, UK

**Anne Ephrussi**

EMBL, Germany

**Jiri Friml**

Ghent University, Belgium

**Bob Goldstein**

University of North Carolina at Chapel Hill, USA

**Hiroshi Hamada**

Osaka University, Japan

**Shigeo Hayashi**

RIKEN CDB, Japan

**Carl-Philipp Heisenberg**

MPI-CBG, Germany

**Robert Insall**

Beatson Institute for Cancer Research, UK

**Christopher Kintner**

The Salk Institute, USA

**Juergen Knoblich**

IMBA, Austria

**Thomas Lecuit**

IBDML, France

**Fumio Matsuzaki**

RIKEN CDB, Japan

**Roberto Mayor**

University College London, UK

**Hiroki Nishida**

Osaka University, Japan

**Shigeo Ohno**

Yokohama City University, Japan

**Sarah Russell**

Peter MacCallum Cancer Centre, Australia

**Hitoshi Sawa**

RIKEN CDB, Japan

**Rudolf Winklbauer**

University of Toronto, Canada

**Zhenbiao Yang**

University of California, Riverside, USA

**Organizers**

**Carl-Philipp Heisenberg**

**Masatoshi Takeichi**

**Fumio Matsuzaki**

**Hitoshi Sawa**

**Application Deadline**

**December 19, 2008**

**A limited number of travel fellowships will be available to younger scientists from abroad.**

**Contact**

RIKEN Center for Developmental Biology (CDB)

2-2-3 Minatojima-minamimachi

Chuo-ku, Kobe, 650-0047, Japan

Tel : +81-78-306-3010

Fax : +81-78-306-3039

E-mail : [sympo2009@cdb.riken.jp](mailto:sympo2009@cdb.riken.jp)

<http://www.cdb.riken.jp/sympo2009/>

